



SPECIFICATIONS

2003 CATERPILLAR 385BL

Customer Owned Certified

TRACK EXCAVATORS

Inspection Number: 696923	Serial #: ANS00328
Date Created: 05/26/2010 05:25:29 PM CDT	Engine Serial #: BLC01102
Last Updated: 05/27/2010 10:39:20 AM CDT	Transmission Serial #: N/A
Originated By: Raul Martinez	SMU/Hrs: 12283
Inspector: Raul Martinez	Last Scheduled Oil Sample: N/A
Reviewer: N/A	Last Cat Track System Inspection: 05/20/2010
Salesman: N/A	Last Preventative Maintenance: 04/10/2010
Location: HOOVER DAM, Arizona, United States	Recommendation: repair and sell
Asking Price: N/A	Final Price: N/A

Client

Name: Company: Cashman Equipment
Address: 3300 St.Rose Parkway
City: Henderson
State: Nevada
Country: United States
Zip/Postal Code: 89052

Description

EROP, A/C WITH HEATER, BOOM ONE PIECE MASS ARRANGEMENT 23' 8" REACH, STICK 9' 2" REACH, J B LINKAGE, AUTO LUBE.ESCO 84" BUCKET, COUNTER WEIGHT REMOVAL SYSTEM.

Condition

GENERAL APPEARANCE

	Condition - Remarks	Parts	Labor
Radiator Grill & Shroud	Good		
Eng. Enclose Hood / Stack	Good		
Catwalk	Fair - R/R CATWALK MISSING A SECTION OF IT. L/R CATWALK IS DAMAGED.		
Fuel Tank	Good		
Crankcase Guard / Battery Box	Good		
Main Frame Welds	Good		
Counterweight	Good		
Steps / Ladder	Good - DENTED STEPS.		
Grab Irons	Good		
Paint	Fair		
Hood	Good		
Sheet Metal	Fair - PUMP DRIVE ACCESS DOOR IS SLIGHTLY BENT AND IT WON'T LATCH PROPERLY.		
Engine Doors	Good		

	Condition - Remarks	Parts	Labor
S.O.S. Taken	No		
Extra Fuel Tanks	No		
Cleaning Required	Yes		
Notes	LARGE BODY DAMAGE ON THE R/R BOTTOM CORNER. DENTS ON THE L/R BOTTOM BODY CORNER. DENTS ON THE R/F STORAGE COMPARTMENT.		

SAFETY ITEMS

	Condition - Remarks	Parts	Labor
Cab Guards	No		
ROPS	Yes		
Safety Decals In Place	Yes		

	Condition - Remarks	Parts	Labor
Horn	Good		
Brake Hold	Good		
Swing Brake	Good		

GAUGES, OPERATOR STATION, CONSOLE

	Condition - Remarks	Parts	Labor
Gauges	Fair - ENGINE OIL PRESSURE GAUGE NOT WORKING.		
Switches	Good		
Door Latches	Good		
Windshield Wipers	Fair - WORN WIPER BLADE.		
Heater	Good		
Air Conditioner	Good		
Interior Lights	Good		
Meter	Good		
Seat Cushion / Arm Rest	Good		
Floor Boards	Good		
EMS Panel / Warnings	Fair - HYDRAULIC FILTER LIGHT KEEPS FLASHING WHEN OPERATING IMPLEMENTS.		
Glass/Mirrors	Fair - FRONT UPPER WINDOW GLASS IS CRACKED.		
Seat Belt	Fair - SEAT BELT IS OPERATIONAL, BUT EXPIRED.		

	Condition - Remarks	Parts	Labor
Current Safety Manual	No		
Current Parts Manual	No		
Current O&MM	Yes		
ROPS Certification Plate	Yes		
Back Up Alarm	Yes		

	Condition - Remarks	Parts	Labor
Fuel Level	3/4 TANK OF FUEL.		

ENGINE

	Condition - Remarks	Parts	Labor

Knocking	No		
Compression in Radiator	No		
Water in Oil	No		
Fluid Levels OK?	No - LOW ENGINE OIL LEVEL.		
EPA Decal	Yes		

	Condition - Remarks	Parts	Labor
Anti-Freeze Color	RED (ELC)		
Oil Pressure (H/L/N)	NORMAL		
Smoke (B/D/L/W)	NORMAL		

	Condition - Remarks	Parts	Labor
Operating Condition	Good - ENGINE STARTED AND RAN NORMALLY WITHOUT ANY UNUSUAL NOISE DURING LIMITED CHECK.		
Air Cleaners	Good		
Governor	Good		
Turbocharger / Blower	Good		
Fuel Injection System	Good		
Engine Supports	Good		
Belts / Pulleys	Good		
Exhaust / Muffler	Good		
Notes	ENGINE ECM HOURS WERE 10,239 HOURS AT TIME OF THIS INSPECTION (ENGINE MAY HAVE BEEN REPLACED).		

————— COOLING SYSTEM —————

	Condition - Remarks	Parts	Labor
Water Pump	Good		
Fan	Good		
Hoses	Good		
Radiator	Good		
Coolers	Good		
Fan Drive	Good		

————— ELECTRICAL, STARTING AND CHARGING SYSTEM —————

	Condition - Remarks	Parts	Labor
Batteries / Cables	Good - BATTERIES COVER IS LOOSE.		
Starter	Good		
Alternator	Good		
Wiring	Good		
Lighting	Good		

————— FINAL DRIVES —————

	Condition - Remarks	Parts	Labor
Planetaries / Diff	Good		
Housings	Good		

————— HYDRAULICS —————

--	--	--	--

	Condition - Remarks	Parts	Labor
Operating Condition	Good		
Pump Drive	Good		
Pumps & Valves	Good		
Boom Cylinder	Good		
Bucket Cylinder	Good		
Stick Cylinder	Good		
Hose Lines	Good		
Control Linkage	Good		
Swing Gear	Good - SLIGHT PLAY AT THE SWING BEARING.		
Tank	Good		
Swing Motors	Good		
Travel Motors	Good		
Hydraulic Swivel	Good		

————— BOOM —————

	Condition - Remarks	Parts	Labor
Pins & Bushings	Good		
Boom Condition	Good		

	Condition - Remarks	Parts	Labor
Boom Length (Actual Length)	MASS ARRANGEMENT BOOM 23' 8"		
Notes	SOME PLAY AT THE BOOM LIFT CYLINDER LOWER MOUNTING PINS.		

————— STICK —————

	Condition - Remarks	Parts	Labor
Pins & Bushings	Good		
Stick Conditions	Good		

	Condition - Remarks	Parts	Labor
Stick Length	9' 2 " REACH		

————— BUCKET —————

	Condition - Remarks	Parts	Labor
Cutting Edges	Poor - ONE BUCKET CORNER BIT IS MISSING AND THE OTHER IS BROKEN.		
Teeth / Adapters	Fair - EXCESS WEAR ON BUCKET CORNER TEETH.		
Bucket Bottom	Good		
Bucket Sides	Good		
Bucket Linkage	Good - J-B LINKAGE.		
Bucket Mounts	Good		

	Condition - Remarks	Parts	Labor
Width	84"		
Brand	EACO		

————— UNDERCARRIAGE —————

	Condition - Remarks	Parts	Labor

	Condition - Remarks	Parts	Labor
Track Frame - Left	Good		
Track Frame - Right	Good		
Notes	BOTH ROLLER FRAMES HAVE SEVERAL MISSING TRACK GUIDES AND THE OTHERS HAVE EXCESS WEAR.		

	Condition - Remarks	Parts	Labor
Pins & Bushings Turned?	No		

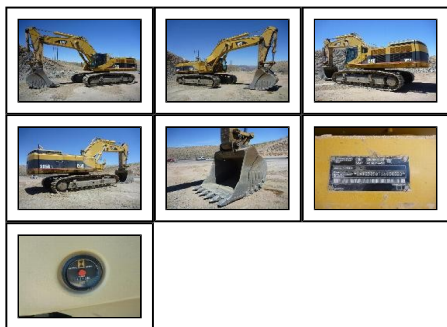
	Measurement (L)	Measurement (R)	% Worn (L)	% Worn (R)	Total Potential Hours (L)	Total Potential Hours (R)
Pins & Bushings (Internal)	1048 MM (TAPE)	1047 MM (TAPE)	40	35		
Track Shoes (Width)	2.45 INCHES (ULTRASONIC)	2.45 INCHES (ULTRASONIC)	25	25		
Idlers Front	25 MM (DEPTH GAUGE)	25 MM (DEPTH GAUGE)	35	35		
Carrier Rollers Front	1.25 INCHES (ULTRASONIC)	1.25 INCHES (ULTRASONIC)	40	40		
Carrier Rollers Rear	1.33 INCHES (ULTRASONIC)	1.33 INCHES (ULTRASONIC)	20	20		
Links	1.43 INCHES (ULTRASONIC)	1.43 INCHES (ULTRASONIC)	36	36		
Track Roller 1	2.78 INCHES (ULTRASONIC)	2.78 INCHES (ULTRASONIC)	33	33		
Track Roller 2	2.81 INCHES (ULTRASONIC)	2.81 INCHES (ULTRASONIC)	25	25		
Track Roller 3	2.82 INCHES (ULTRASONIC)	2.82 INCHES (ULTRASONIC)	23	23		
Track Roller 4	2.83 INCHES (ULTRASONIC)	2.83 INCHES (ULTRASONIC)	20	20		
Track Roller 5	2.80 INCHES (ULTRASONIC)	2.83 INCHES (ULTRASONIC)	27	20		
Track Roller 6	2.83 INCHES (ULTRASONIC)	2.83 INCHES (ULTRASONIC)	20	20		
Track Roller 7	2.83 INCHES (ULTRASONIC)	2.83 INCHES (ULTRASONIC)	20	20		
Track Roller 8	2.83 INCHES (ULTRASONIC)	2.83 INCHES (ULTRASONIC)	20	20		
Track Roller 9	2.79 INCHES (ULTRASONIC)	2.80 INCHES (ULTRASONIC)	30	27		
Notes	SEVERAL TRACK LINKS HAVE BEEN RECENTLY REPLACED ON THE LEFT TRACK. BOTH TRACKS HAVE SEVERAL LOOSE TRACK SHOES.					

	Condition - Remarks	Parts	Labor
Link Part Number	1740217 AND 1740218		
Links	51 LINKS ON EACH TRACK.		
Track Shoes	900 MM DOUBLE GROUSERS		
Idlers	GOOD		
Carrier Rollers	GOOD		
Pins & Bushings (External)	MODERATE WEAR ON TRACK BUSHINGS (WEAR CONSISTENT WITH HOURS AND AGE OF MACHINE).		
Segments	MODERATE WEAR ON TRACK SEGMENTS (WEAR CONSISTENT WITH HOURS AND AGE OF MACHINE).		
Notes	SCALLOPING, PIN/PIN BOSS AND RAIL SIDE WEAR ON BOTH TRACKS. TRACKS ARE VERY NOISY WHEN TRAVELING.		

	Parts	Labor
MACHINE INSPECTED 5-20-2010.		
HYDRAULIC AND FUEL UPPER GUARDS ARE MISSING.		

Photos

Click thumbnails to enlarge.



Caterpillar Confidential: Green. Copyright © 2010, Caterpillar Inc. All Rights Reserved.